

THUMBS UP!

SCHOOL BUS SAFETY

Pre-K
&K



STUDENT SAFETY

ACTIVITY BOOK

PRESENTED BY



BUSPATROL



BUS SAFETY QUICK TIPS

Check before you step!

Know the danger zone.

“I see the driver. The driver sees me.”

Wait for the driver's signal to cross.

Look left, right, and left again.

Use a backpack to avoid dropping things.

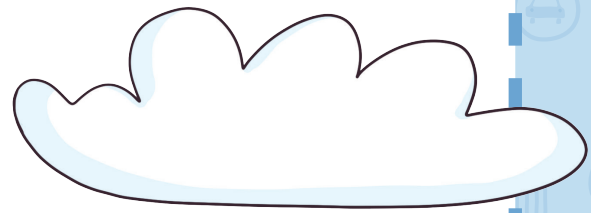
Horn means danger.



GETTING TO THE BUS STOP

- ☆ **Plan to get to the bus stop at least five minutes early.** Get a good night's sleep to wake up early. You do not want to be rushing around traffic trying to catch the bus!
- ☆ Always remember to pack all your items in your backpack before you leave home so you do not drop anything on the road.
- ☆ If you need to cross the street to get to the bus stop, always stop where it is safe and look **LEFT, RIGHT, and LEFT again before crossing.**
- ☆ Always stay alert and listen for cars that you may not see.
- ☆ Never run towards the bus or run after the school bus if it has already left the bus stop.

AT THE BUS STOP (AS THE BUS APPROACHES)



- ☆ Stay safe while waiting for the bus by staying off the street and away from cars. Wait for the bus on the sidewalk or grass (at least 6 feet away - three giant steps).
- ☆ Do not talk to strangers while waiting for the bus and never get into the car with a stranger.
- ☆ As the bus approaches, the yellow lights change to red. **The red lights and red stop sign on the side of the bus tell all cars to STOP.**
- ☆ **BE AWARE - sometimes drivers do not respect the red lights or forget to stop like they should.**
- ☆ Be careful, cars could pass on both the left and right side of the bus - and from the front or back direction.
- ☆ When the bus comes, wait for it to come to a complete stop before getting on.
- ☆ Wait until the bus stops, the door opens, and the driver says that it's okay, before stepping onto the bus.

GETTING ON THE BUS

- ☆ Get on the bus one at a time. Form an orderly line as the bus approaches, with the first student standing at least 6 feet away from traffic.
- ☆ Keep electronic devices packed away as you prepare to board. Never use an electronic device or wear earbuds when boarding.
- ☆ **Walk slowly and always hold the railings, as you walk up the steps.**

WHILE ON THE BUS

- ☆ Pick a seat, face forward, and stay seated.
- ☆ Make sure to obey the bus driver's rules and directions.
- ☆ Talk quietly so the bus driver can focus on the road.
- ☆ Do not play, shout, or throw things in the bus.
- ☆ Do not eat on the bus.
- ☆ If the windows are down, keep your head and arms safely inside.
- ☆ Keep your feet and backpacks out of the aisles so no one gets hurt.
- ☆ We stay in our seats until the bus stops.
- ☆ If there is an emergency, listen to the driver and follow instructions. NEVER play around on the Emergency Exit door steps.



GETTING OFF THE BUS

ARRIVING AT SCHOOL AT THE START OF THE DAY

- ☆ Wait until the bus stops, the door opens, and the driver says that it's safe, before stepping off the bus.
- ☆ When exiting the bus, be careful that clothing and backpacks don't get caught in the handrails or doors.
- ☆ Wait for your turn to get off the bus. Get in line and then patiently exit one at a time – do not push people in front of you.
- ☆ Walk (don't run) straight towards the school.
- ☆ After you get off the bus, walk at least five giant steps away (at least 10 feet) from the side of the bus to make sure you are out of the danger zone and are using the safe walking path.
- ☆ If you drop something near the bus, tell the bus driver by waving your hands above your head and receiving instructions from the bus driver. Never try to pick it up because the driver may not be able to see you.
- ☆ Never walk or run between parked cars and buses.

RETURNING HOME AFTER SCHOOL

- ☆ Wait until the bus stops, the door opens, and the driver says that it's safe, before stepping off the bus.
- ☆ When exiting the bus, be careful that clothing and backpacks don't get caught in the handrails or doors.
- ☆ Wait for your turn to get off the bus. Get in line and then patiently exit one at a time – do not push people in front of you.
- ☆ Always be alert and focused when near the school bus danger zone.
- ☆ Never walk behind the bus.
- ☆ If you drop something near the bus, tell the bus driver by waving your hands above your head and receiving instructions from the bus driver. Never try to pick it up because the driver may not be able to see you.
- ☆ **NOTE:** The driver's horn signals DANGER.

AFTER GETTING OFF THE BUS

DO YOU HAVE TO CROSS THE ROAD?

NO

- ☆ After you get off the bus, walk at least five giant steps away (at least 10 feet) from the side of the bus to make sure you are out of the danger zone and are using the safe walking path.

YES

- ☆ After you get off the bus, walk at least five giant steps away (at least 10 feet) from the side of the bus to make sure you are out of the danger zone and are using the safe walking path.
- ☆ “Be aware — cross with care!” Wait until the school bus has stopped all traffic before stepping out onto the road.
- ☆ Be sure that the bus driver can see you, and you can see the bus driver.
- ☆ Wait for the bus driver’s signal that it is safe to cross the street.
- ☆ **LISTEN** carefully to the bus driver’s crossing instructions.
- ☆ **STOP:** The driver will hold their hand up for you to stay put, while they check to make sure all traffic has stopped.
- ☆ **LOOK:** The driver will give the thumbs up to signal it is time to look both ways. Look left, right, and left again.
- ☆ **CROSS:** The driver will point with the thumbs up in the direction the students should cross using the universal crossing signal. Remember to look, left, right and left again while in front of the bus.

LOADING AT SCHOOL

- ☆ Line up outside quietly and patiently for the bus. Form an orderly line as the bus approaches, with the first student standing at least three giant steps away (at least 6 feet) from the curb.
- ☆ Check with the bus driver or teacher to make sure you get on the right bus.
- ☆ Walk straight towards the bus door and be sure your driver can see you. Get on the bus one at a time.
- ☆ If you drop something near the bus, tell the bus driver by waving your hands above your head and receiving instructions from the bus driver. Never try to pick it up because the driver may not be able to see you.
- ☆ Never run towards the bus or run after the school bus if it has already left the bus stop.
- ☆ Never walk behind the bus



REFERENCES:

Facts About Buses:

<http://www.scienceforkidsclub.com/buses.html>

NAPT School Bus Crossing Arms:

<https://www.napt.org/Files/Resources/SchoolBusCrossingArmsStateUse.pdf>

Kids, the School Bus, and You

http://www.nhtsa.gov/people/injury/buses/kidsschoolbus_en.html

NHTSA's Safety City Bus Safety

https://one.nhtsa.gov/people/injury/buses/kidsschoolbus_en.html

School Bus Safety Web

<http://www.ncbussafety.org/ncbussafety.html>

NYC Gov

<https://www.schools.nyc.gov/school-life/transportation/safe-travel-tips>

<https://www.nhtsa.gov/road-safety/school-bus-safety#the-topic-bus-stop-safety>

COPYRIGHT NOTICE:

Text and illustrations copyright © 2022 by BusPatrol America LLC.

All rights reserved. International copyright secured. No part of this book may be reproduced, stored in a retrieval system, or transmitted in any form or by any means - electronic, mechanical, photocopying, recording, optional scan, or otherwise - without the prior written permission of the copyright holder.

The publisher takes no responsibility for the use of any of the materials or methods described in this book, nor the products thereof.

BusPatrol America LLC
8540 Cinder Bed Rd, Lorton, VA, 22079-1480

Editor: K. Spree
Art Direction and Project Manager: A. Kornetskaya
Illustrator: Z. Lyapina
Design Layout: T. Moreno
Editorial Director: PN. Tsoukas

The illustrations in this book were created digitally.




Coloring Sheet

START YOUR DAY OFF RIGHT! BE ON TIME.

Plan to get to the bus stop at least five minutes early. Get a good night's sleep to wake up early. You do not want to be rushing around traffic trying to catch the bus!



 Color in all the elements on the page including Jill's clock.

NEVER RUN TO OR FROM THE BUS

BE AWARE - sometimes drivers do not respect the red lights or forget to stop like they should.





Coloring Sheets

BE SAFE ON THE WALKING PATH

Make sure you walk at least five giant steps away
(at least 10 feet) from the side of the bus to make sure you are
using the safe walking path.

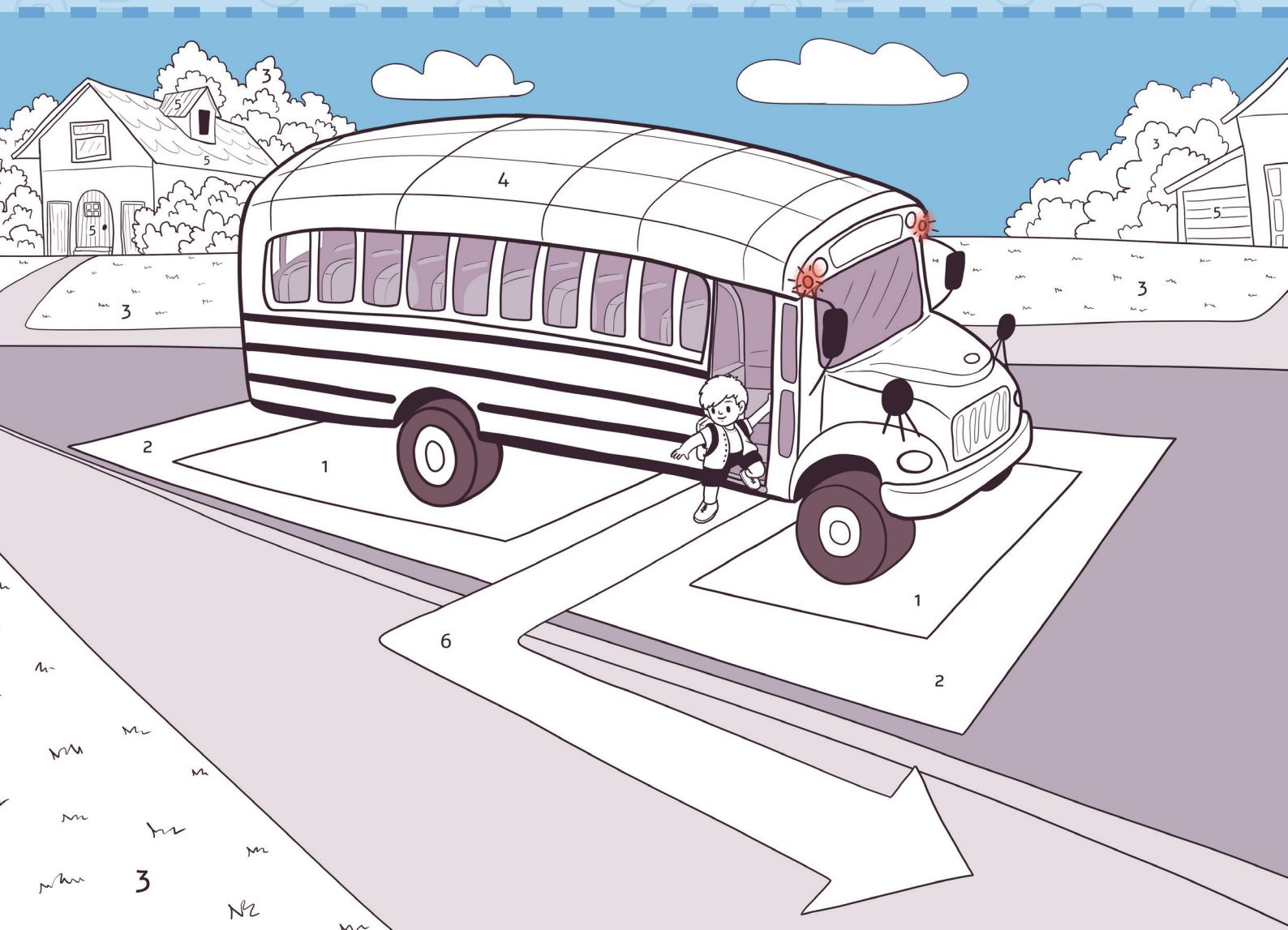




Always obey the school bus driver
and wait for the crossing signal!
I see the bus driver and the bus
driver sees me!

GET ON AND OFF THE BUS SAFELY

Use the safe walking path to avoid the danger zone. Number 1 and 2 below represent the dangerous areas around the school bus.



Connect the Dots

LEARN THE BUS DRIVER'S CROSSING SIGNALS

Make sure to STOP, LOOK then CROSS when given the signals.



STOP



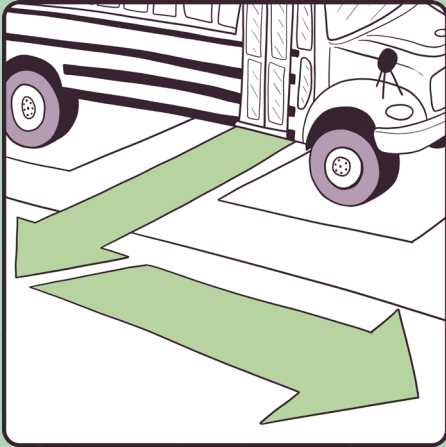
LOOK



CROSS

CAN YOU RECOGNIZE THE SCHOOL BUS SAFETY SYMBOLS?

Add a word below each image that represents what you see.
Make sure to color the first letter of that word!



G
B
W



D
N
E



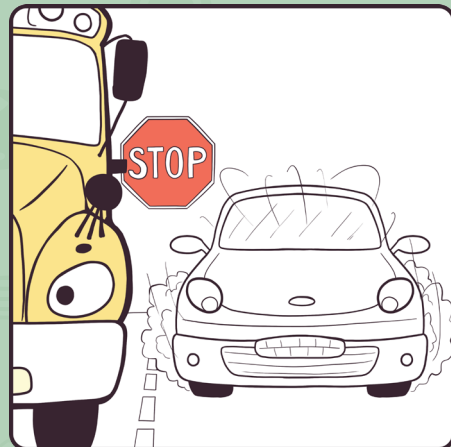
A
P
L



T
P
Y



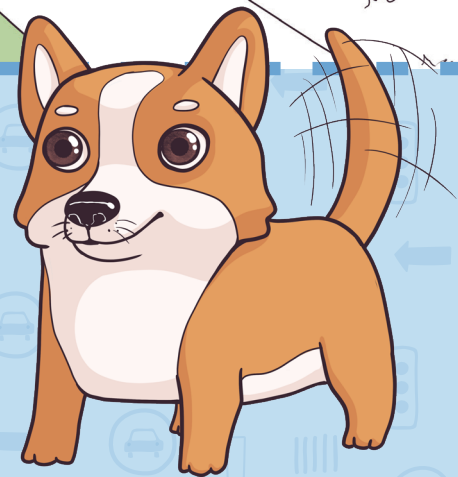
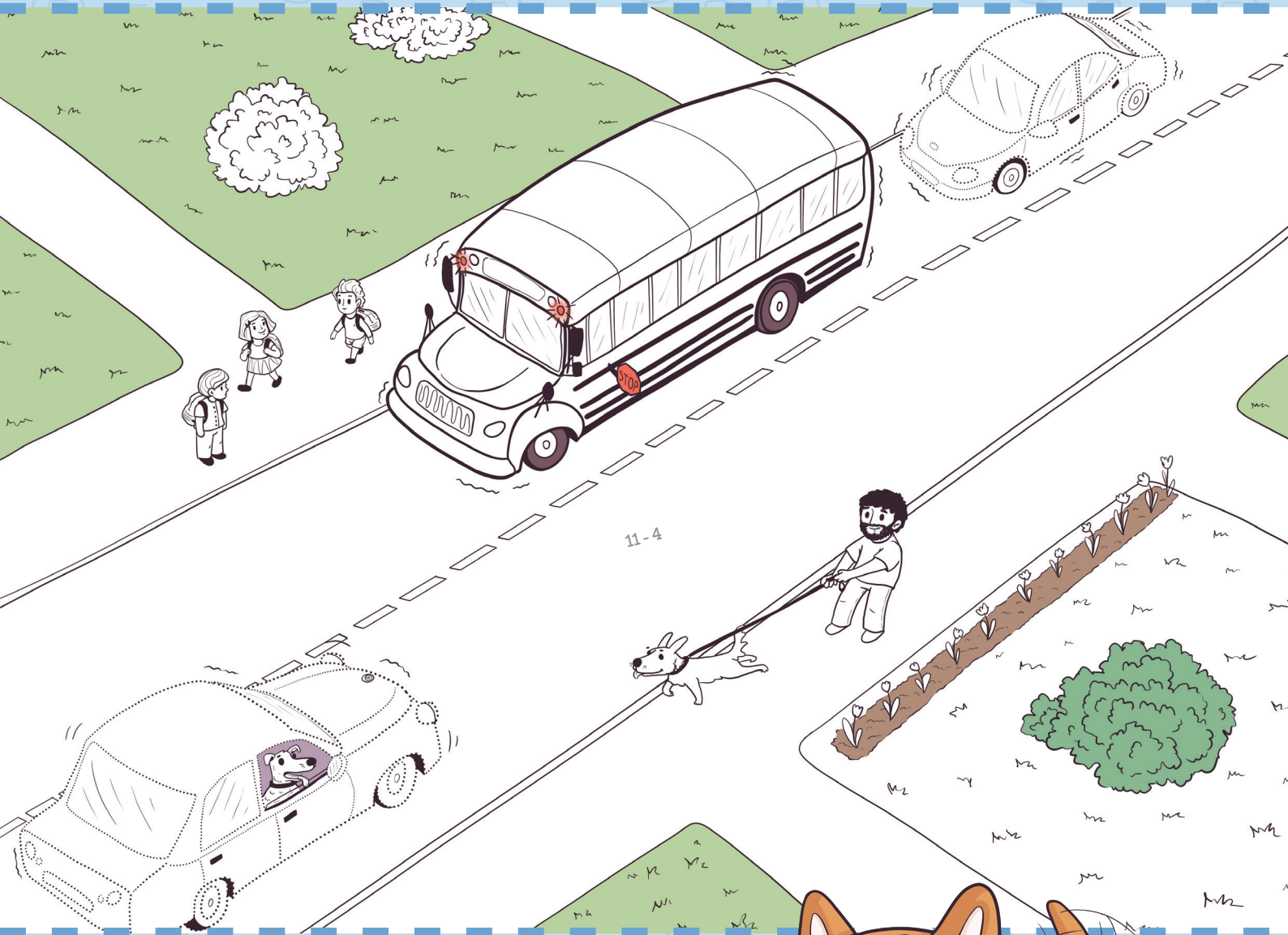
B
O
J



U
N
C

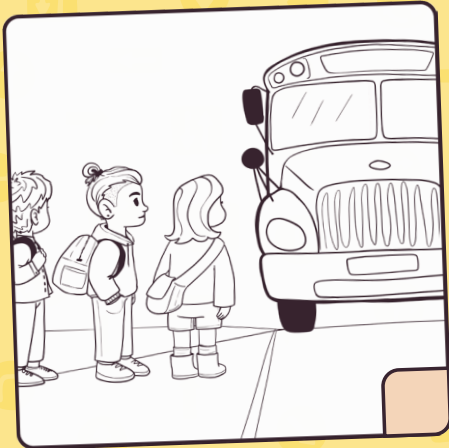
STAY ALERT!

Be careful, cars could pass on both the left and right side of the bus – and from the front or back direction.

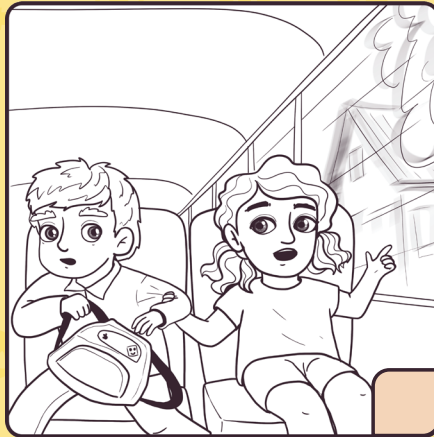


DO YOU KNOW THE SCHOOL BUS SAFETY STEPS?

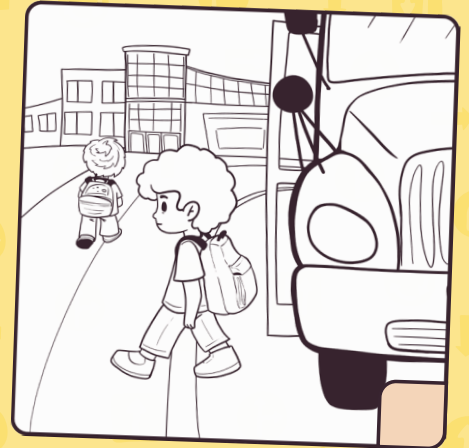
Place the following images in order using numbers.



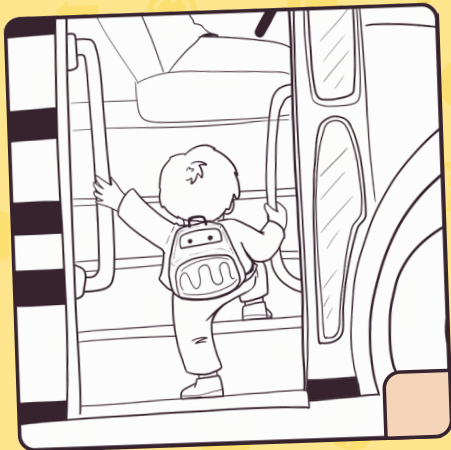
Wait for the bus to come to a complete stop before stepping on the bus.



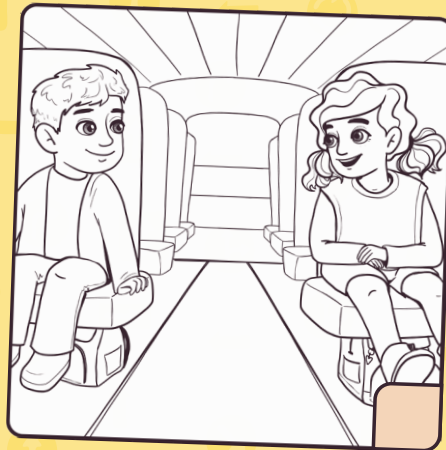
Talk quietly so the bus driver can focus on the road.



Walk out to the safe walking path. Never run from the bus.



Hold on to the handrail and walk slowly up the steps



When the bus is moving, stay in your seat. Keep the aisle clear and your backpack at your feet.

DRAW THE SCHOOL BUS SAFETY LESSONS

Read the sentences below and draw an image that best represents the description.

I love going to school!
This is my school bus!

When I'm getting on and off the bus,
this "STOP" arm will always be out.

I always wait for the signals from the
driver before crossing the street. This is
the sign that tells me I can cross safely!

I always put all my stuff
in this backpack!

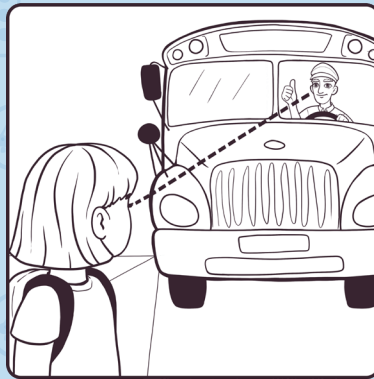
CAN YOU SPOT THE STUDENTS' GOOD AND BAD BEHAVIOR?

Draw a ✓ next to images with showing SAFE behavior.

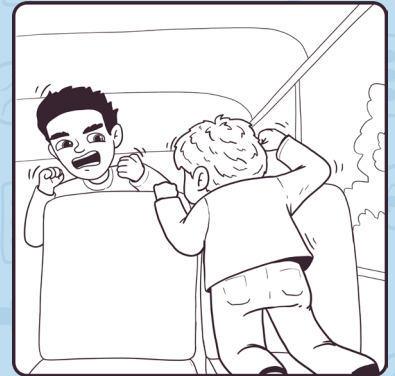
Draw an ✗ next to images showing UNSAFE behavior.



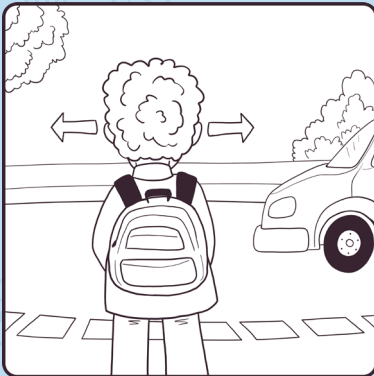
Mary is sitting quietly and facing forward on the bus.



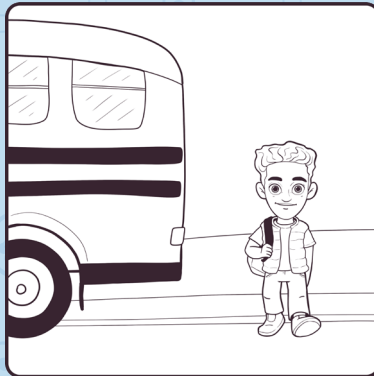
Dominique is making eye contact with the driver. "If I see you, then you see me".



Gabriel and Max are arguing and shouting on the bus.



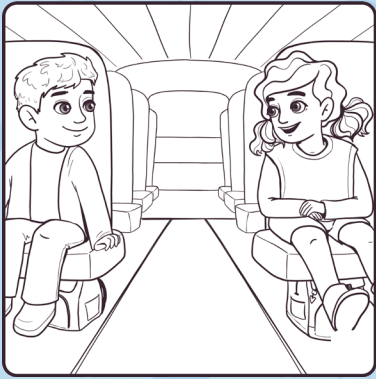
Todd is looking LEFT, RIGHT and LEFT again before crossing the street.



Jack is walking behind the bus.



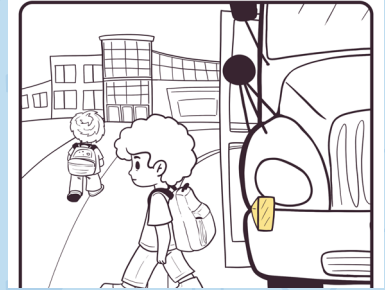
Jean has his backpack under the seat and remains seated while the bus is moving.



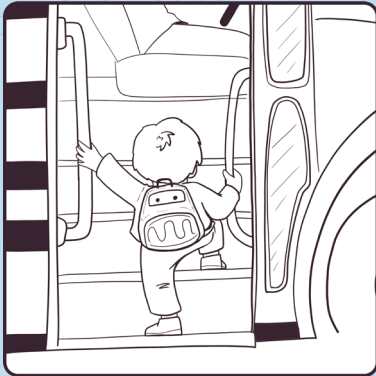
Isabelle and Nick are keeping the aisle clear and talking quietly.



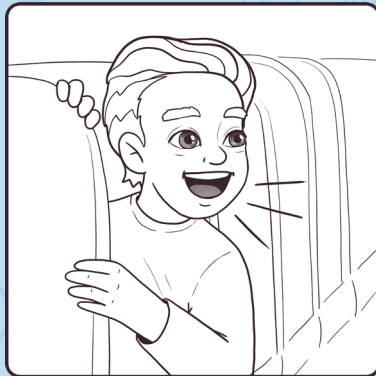
Gabriel is throwing objects.



Chris is walking slowly out of the bus and out of the danger zone.



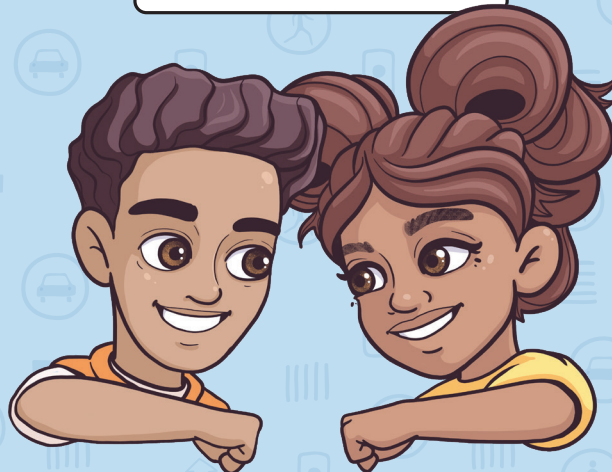
Chris is holding on the handrail while going up the steps on the bus.



Alex is shouting and disturbing the bus driver.

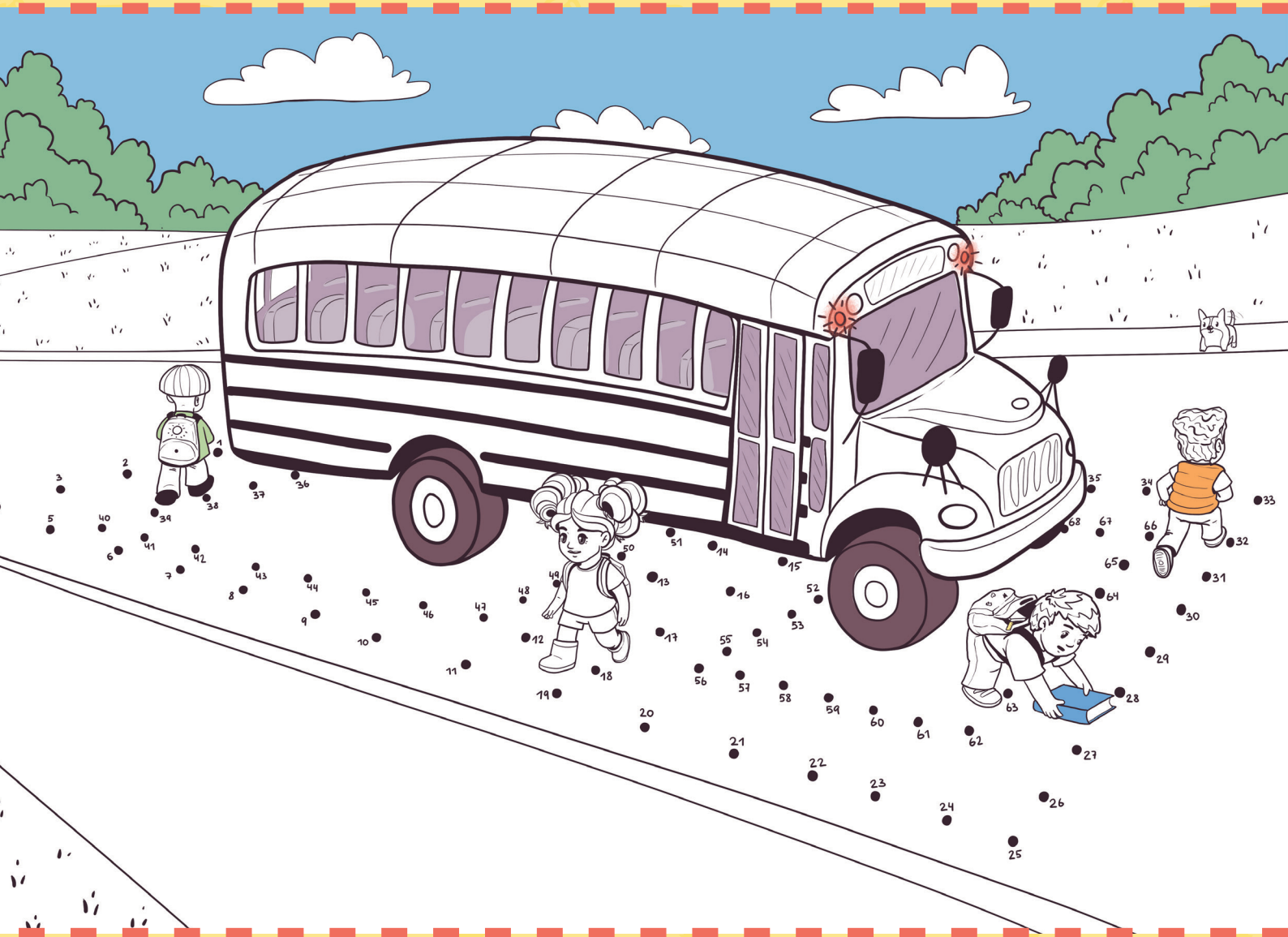


Max is eating on the bus.



KNOW THE DANGER ZONE

It is important to know the difference between safe behavior and dangerous behavior.



SAFE BEHAVIOR

- ☆ After you get off the bus, walk at least five giant steps away (at least 10 feet) from the side of the bus to make sure you are out of the danger zone and are using the safe walking path.

DANGEROUS BEHAVIOR

- ☆ If you drop something near the bus, tell the bus driver by waving your hands above your head and receiving instructions from the bus driver. Never try to pick it up because the driver may not be able to see you.
- ☆ Never walk behind the bus.



SAFETY CERTIFICATE

This certificate is presented to:



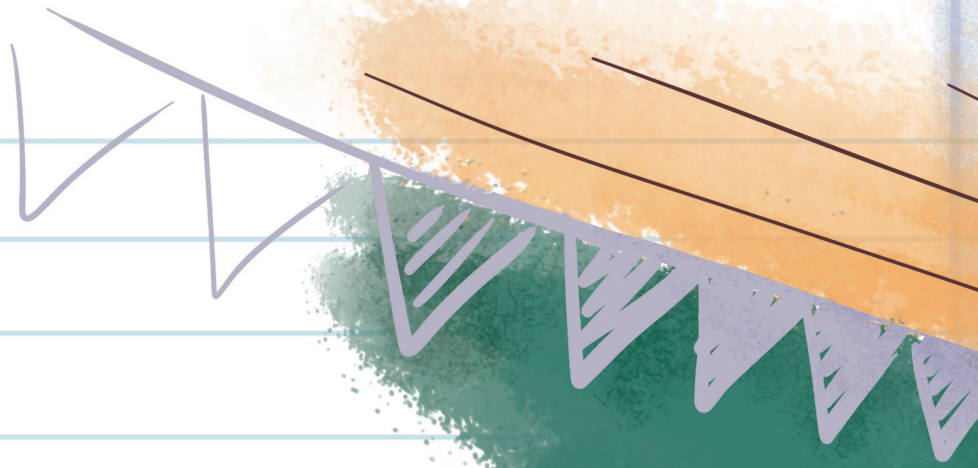
Name and Surname

I will follow and respect all school bus safety rules.
I will be considerate of the bus driver and my fellow students.

Date

Signature





1
2
3

